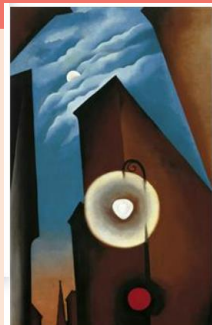


### Knowledge

- ❖ Georgia O'Keeffe was born in 1887 and died in 1986.
- ❖ She was famous for her paintings which included paintings of New York and flowers.
- ❖ Georgia O'Keeffe experimented with abstract art, and used colour, shapes and brush strokes to express ideas and feelings.
- ❖ Collage is the technique of overlapping and overlaying pieces of material to create an effect.
- ❖ Adding white to paint creates a lighter tone.



Shelton Hotel New York No. 1  
Georgia O'Keeffe • 1926



New York with Moon  
Georgia O'Keeffe • 1925



Radiator Building - Night,  
New York  
Georgia O'Keeffe • 1927



### Prior Knowledge

- ❖ Primary and secondary colours.
- ❖ Simple collage techniques.
- ❖ Landscape is a picture of natural scenery.

### Key Vocabulary

- ❖ Georgia O'Keeffe
- ❖ pattern
- ❖ line
- ❖ tone
- ❖ collage
- ❖ texture
- ❖ watercolour
- ❖ cityscape

### Skills

- ❖ To sketch to make records.
- ❖ To add white to paint to create lighter tones.
- ❖ To overlap and overlay materials to create texture.
- ❖ To use watercolours for effect.

### Safeguarding

- ❖ Children to wear aprons when painting.
- ❖ Ensure scissors are appropriate for the task.
- ❖ Keep glue in small pots to avoid excessive pouring and spillages.