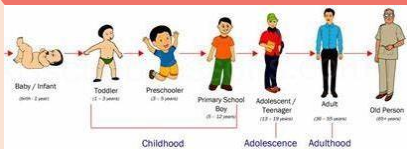


### Knowledge

- ❖ Things that are living, move, feed, grow, reproduce and use their senses.
- ❖ Animals grow until they reach maturity and then don't grow any larger
- ❖ Animals reproduce when they reach maturity (adulthood).
- ❖ Different animals live to different ages and eventually die.
- ❖ Different animals reach different sizes before they are able to reproduce at different ages.
- ❖ Animals, including humans, have offspring which grow into adults.
- ❖ Exercise, eating the right amounts of different types of food and hygiene are important to maintain good health and wellbeing and hygiene are important to maintain good health and wellbeing.
- ❖ Habitats are places where animals and plants live.
- ❖ Animals live in habitats in which they are suited.
- ❖ Different kinds of animals and plants depend on each other within habitat.
- ❖ Animals get their food from plants and other animals. This can be shown in a food chain.
- ❖ A food chain begins with a producer. This is often a green plant because plants can make their own food.
- ❖ A living thing that eats other plants is called a consumer.



### Prior Knowledge (Year 1)

- ❖ Animals live in different places and adapt to survive.
- ❖ Animals have senses to help them survive.
- ❖ Animals have developed a range of ways to find prey and to avoid being eaten.
- ❖ Animals move to get their prey.
- ❖ Animals eat other animals.

### Key Question - What is the life cycle of an animal?

### Skills

- ❖ Ask simple questions.
- ❖ Observe and measure closely (through first-hand experience).
- ❖ Observe closely (through video or pictures).
- ❖ Suggest ways to find out the answers to their questions.

### Key Vocabulary

- ❖ adult
- ❖ young
- ❖ life cycle
- ❖ offspring
- ❖ habitat
- ❖ reproduce
- ❖ maturity
- ❖ diet
- ❖ exercise
- ❖ germs
- ❖ nutrition

### Safeguarding

- ❖ Use of correct body part names linked to our RSE policy.

