

Knowledge

- ❖ All flowering plants make seeds (reproduction) that can grow (germinate) into new plants.
- ❖ Plants need water, light and a suitable temperature to grow and stay healthy.
- ❖ There are two main groups of seed plants - plants with cones and plants with flowers.
- ❖ Some plants die after it has produced its seed (annual) and sometimes the plant lives for many generations producing seeds each year (perennial).

Prior Knowledge (Year 1)

- ❖ Identify and name a variety of common wild and garden plants, including deciduous and evergreen trees.
- ❖ Identify and describe the basic structure of a variety of common flowering plants, including trees.

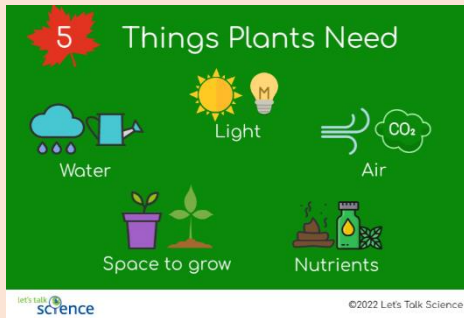
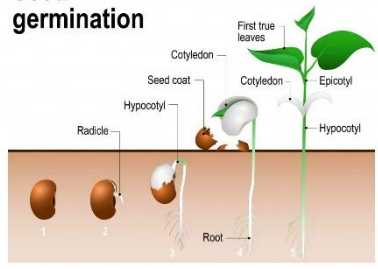
Skills

- ❖ Identifying and classifying.
- ❖ Gathering and recording data to help in answering questions.
- ❖ Observing closely, using simple equipment.
- ❖ Using their observations and ideas to suggest answers to questions.

Key Vocabulary

- ❖ flowering
- ❖ reproduction
- ❖ germinate
- ❖ bulb
- ❖ deciduous
- ❖ evergreen
- ❖ fruit
- ❖ leaf/leaves
- ❖ seed
- ❖ seed dispersal
- ❖ nectar
- ❖ flower
- ❖ petal
- ❖ root
- ❖ shoot
- ❖ stem

Seed germination



Safeguarding

- ❖ Allergic reactions to soil and seeds.
- ❖ Accidentally consumption.
- ❖ Poisonous berries and fungi (in the wild).

