


A decorative graphic on the left side of the slide consists of a network of thin, light green lines. These lines are arranged in a way that resembles a circuit board or a stylized tree structure, with many small circles at the end of the branches. The lines and circles are set against a dark green background that transitions to a lighter green at the top.

SCIENCE WEEK 2022

How many different species of animal do we have in
our school grounds?

The background is a solid green color with a subtle gradient. In the corners, there are decorative white lines that resemble circuit board traces or stylized tree branches. These lines are composed of straight segments and small circles at the ends or junctions. The lines are more prominent in the top-left and bottom-left corners, and less so in the top-right and bottom-right corners.

Dear Children and Parents,
Welcome to Mrs Whittaker's Blog.

Everyday I will collect your findings for the day and make a record of them in the hall. Everything will then go into this Blog.

Happy reading!

Monday 9th May 2022 – Page 1

Well what an amazing start to Science Week!

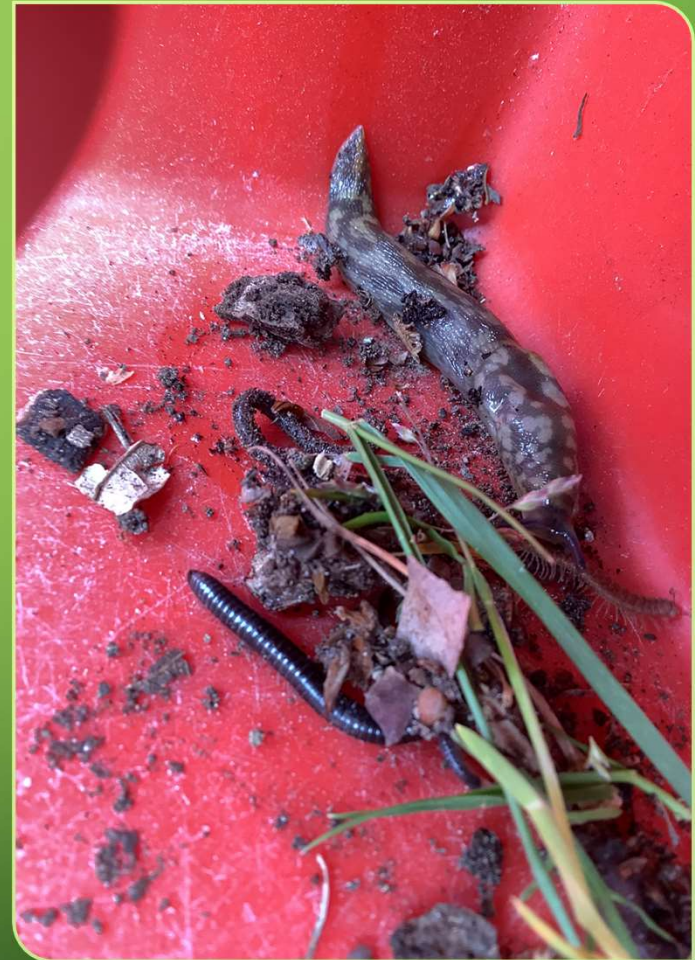
It was a joy to see all the children out in the grounds, with clipboards and magnifying glasses in hand. To hear their chat and excitement about what they found was just lovely.

The day started with a rather large hibernating wasp which appeared in the Year 1 classrooms. As it had just come out of hibernation it was very docile...we only saw it briefly and then it disappeared...unfortunately when it reappeared it was sitting on the carpet and managed to sting someone. That was a lesson learnt for all of us - keep away from wasps at this time of the year when they are not quite awake properly! Interestingly, our wasp would have been a Queen Wasp, as she was about 2.5cm long. Having just come out of hibernation she would be looking for a suitable place to lay her eggs. Luckily we managed to put her carefully outside where she could find a tree to build a nest in.



Monday 9th May 2022 – Page 2

Along with finding different types of animal, the children have also been learning how to use some of the equipment. Much of it was borrowed from Hampshire Wildlife Trust so we are keeping good care of it. It's not easy catching minibeasts as you roll back a log to see what is hiding underneath, and you have to be fast! The children have learnt how to pick them up carefully with trowels or collecting pots and then how to put them gently into a tray. White trays are the best as you can see the colours more easily. There are always escapees of course, so you have to be on the look out for runaway slugs and snails!



Monday 9th May 2022 – Page 3

At the end of the afternoon when the children had gone home we set up the night camera. We placed it along the fence by the woods to start with as we know that our resident fox has a hole there.

We also set up four mammal runs. These contain some tasty food, an inked area and some clean paper. I wonder whose prints we will see in the morning? I suppose you are wondering what tasty morsels we put out for the animals? It may not be on your favourite menudog food and bluebottle larvae. Mmmm, yum yum!



Monday 9th May 2022 – Page 4

The day ended with quite a surprise...a swarm of bees were buzzing around the Rosemary bush at the front entrance by Cherry Tree Hall. It all started about 2pm with lots of frantic buzzing and swarming. By about 3.45pm most of the bees were in one place in the middle of the bush and by 5pm they had made a ball shape. Inside the ball of bees would have been the Queen bee. This is typical behaviour of honey bees at this time of year. They usually swarm so that they can find a new home because their old one is overcrowded. When bees are doing this most of them stay around the queen in a the ball to protect her. The Scout bees are the ones that you will see flying in the air as they look for a new home. Even though you should never go close to a bee swarm, the chances of being stung are tiny low. This is because the bees have filled up on honey before they left home so that they have enough energy to fly about to find a new one.



Monday 9th May 2022 – Page 5

You can find out more information about bees and swarms by visiting The British Bee Keepers Association at www.bbka.org.uk

Our bee swarm is probably quite safe but just to be on the extra safe side we have contacted a local bee keeper, Sam Parkin who is coming to check the bees on Tuesday after school. If the bees are still there he will carefully remove them and take them to another bee keeper.



Monday 9th May 2022 – Page 6

I'm sure you can't wait to see exactly
what we have found.....get ready to be
AMAZED!



[illegible]

The background is a green gradient with decorative circuit-like lines in the corners. These lines are composed of small circles connected by straight lines, resembling a stylized electronic circuit. They are located in the top-left, top-right, bottom-left, and bottom-right corners.

Monday 9th May 2022 – Page 7

Happy reading and see you tomorrow 😊

Mrs Whittaker

A large, empty rounded rectangle with a thin white border is positioned on the right side of the slide. It occupies a significant portion of the right half of the image.